

R4-EM (1 & 2 Series) Electromechanical Rotary Latch

All-metal construction

Electronic access with internal motor control

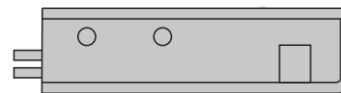
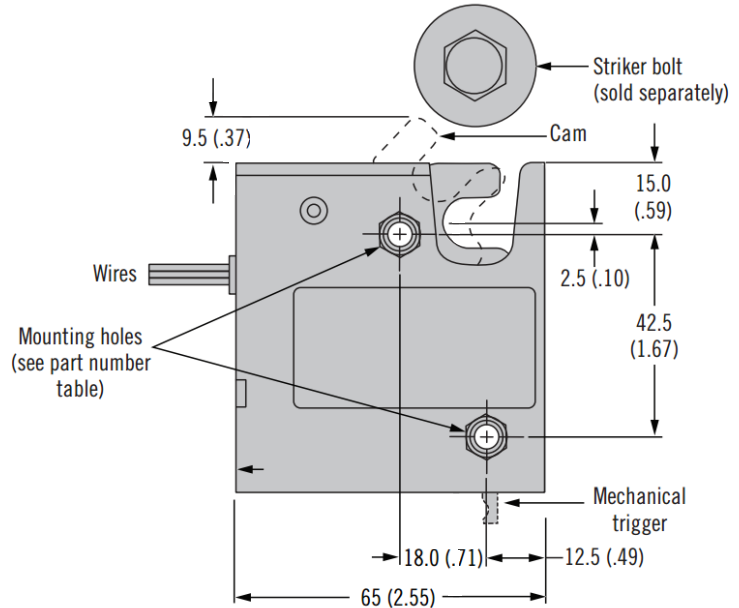
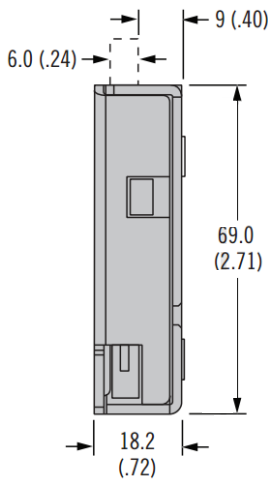
Features

- High strength, steel construction
- Operates against high mechanical loads
- Push-to-close, electronic release
- Versatile rotary mechanism
- Concealed latching
- Microprocessor control
- Minimal power draw
- Simple mechanical override
- Optional internal microswitch for latch open/close output signal



Material

- Mechanism
 - Housing: Steel, zinc plated
 - Cam, trigger: Steel, zinc plated
 - Springs: 300 Series stainless steel
 - Pins: Steel, zinc plated
- Electronic actuator
 - Housing: PC/ABS
 - Cam / follower: Acetal

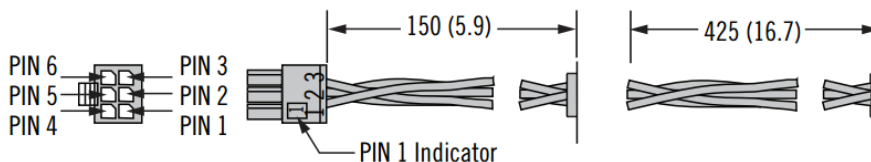


Latch Wiring Connections

With connector

Molex Microfit 3.0 series

Without connector



Electrical Specifications

- Recommended operating voltage: 12 to 24 volt DC
- Typical operating current: Less than 500 mA at 12 VDC
- Peak/Stall operating current: 1 A
- Standby current: 185 uA
- Input signal current draw: 25 mA
- **Optional microswitch closes upon latch closure
- Microswitch rating: 3 A at 12 VDC maximum

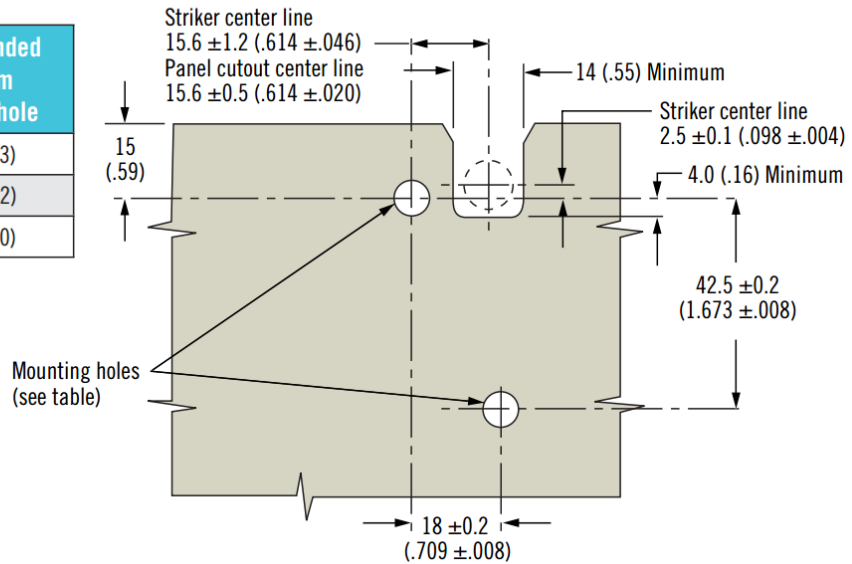
Wire Color Code / Connector Pin Assignment:

- PIN 1: Brown: Ground (-)
- PIN 2: Red: Power 8 to 26 volts DC
- PIN 3: Orange: Control signal 8 to 26 volts DC
- PIN 4: Black: Microswitch common
- PIN 5: Blue: Microswitch N.O. contact
- PIN 6: Grey: Microswitch N.C. contact

Installation

Panel Preparation

Base Mounting Style	Recommended minimum mounting hole
1/4-20 thread	Ø 7.2 (.283)
M6 thread	Ø 6.9 (.272)
Thru hole	Ø 7.6 (.300)



R4 - EM - T B A - 1 S C - P

T Trigger Styles

- 1 Auto relock, side trigger, with kick-out spring
- 2 Delayed relock, side trigger, with light spring
- R1 Auto relock, rear trigger, with kick-out spring
- R2 Delayed relock, rear trigger, with light spring

B Base Mounting Style

- 1 1/4 - 20 thread
- 2 M6 thread
- 3 Ø 7.0 (.27) thru hole

A Alternate Configurations

- None Standard configuration
- 2 Strong (kick out) cam spring (delayed relock)
- 3 High strength cam
- 4 High strength cam with strong (kick out) cam spring (delayed relock)

P Packaging Options

- None Individually packaged
- 1 Bulk packaged

C Connector Options

- 1 With connector
- 2 Without connector

S Switch Options

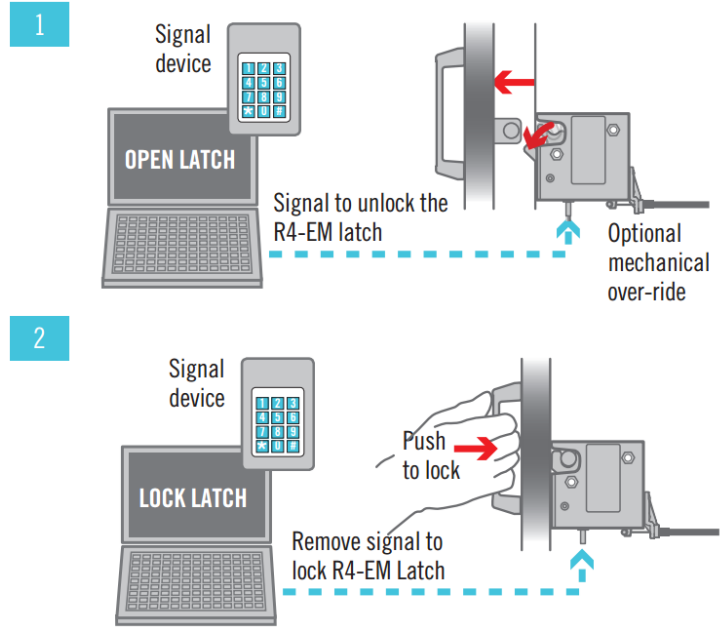
- 3 No switch
- 6 Internal latch status switch

R4-EM Electronic Rotary Latch

Operating instructions

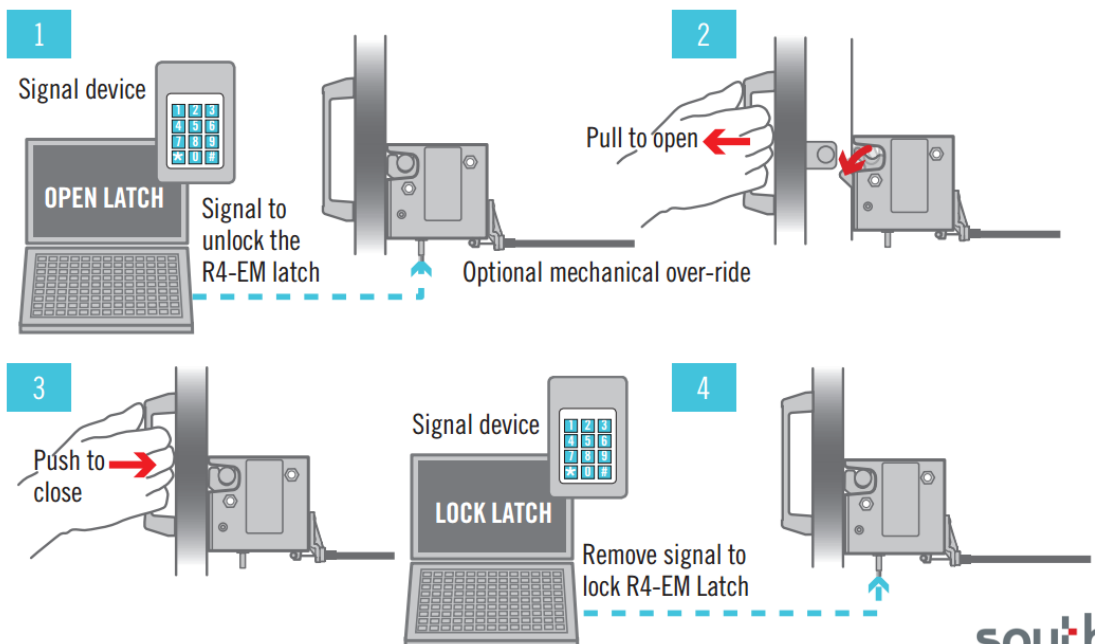
Operation – Auto reload

1. The signal unlocks the R4-EM latch and releases the spring loaded cam which rotates out to push a lightweight door open. The mechanism will cycle through unlatched then re-latched state automatically, regardless of input signal on time.
2. Push door closed to engage striker after unlock time has expired. Striker will rotate cam to closed position



Operation – Delayed reload

1. The signal unlocks the R4-EM latch leaving a biased closed door in the closed position. The unlock time is controlled by the access control device.
2. Manually pull door/striker free from R4-EM latch.
3. Manually push door closed. Striker will rotate cam to closed position, however latch will remain unlocked and can be re-opened as long as signal is present.
4. After accessing the door, the signal can be removed to re-lock the R4-EM. This can be done with the door in the open or closed position.



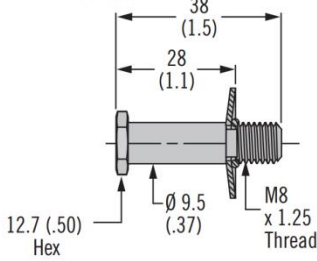
R4-EM Electronic Rotary Latch

Strikers - Cable mounting kits

Striker Bolt - Large

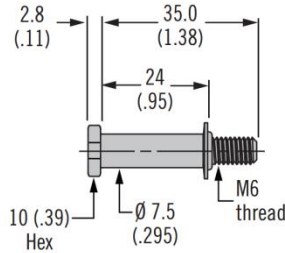
Part number R4-90-121-10

R4-90-121-20



Striker Bolt - Small

Part number R4-90-511-20

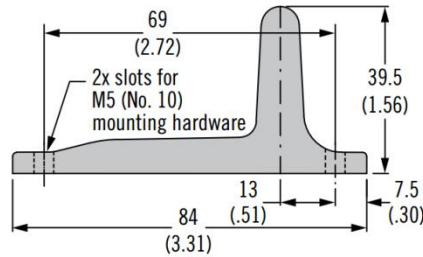
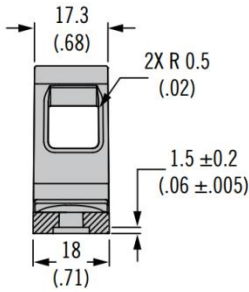


Material

- Striker bolts: Stainless steel or steel, zinc plated
- Cast strikers: Zinc alloy
- Cable mounting kits: Glass-filled nylon, black

Cast Striker with Door Sensor Part number R4-90-804-10

Cast Striker without Door Sensor Part number R4-90-800-10



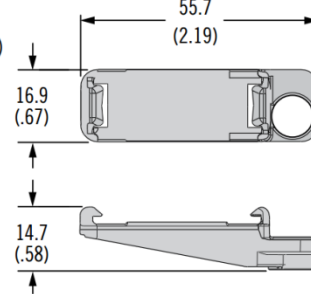
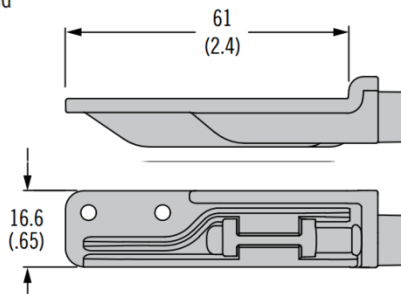
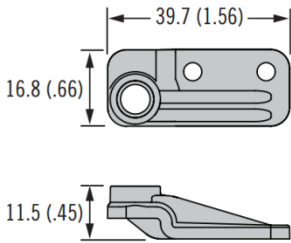
Cable Mounting Kit

Part number R4-EM-52 – Rivets included

Part number R4-EM-72 – Screws included

Part number R4-EM-87 – Rivets included

Part number R4-EM-952



	Striker Bolt		Cast Striker		Cable Mounting Kit			
	R4-90-121-XX	R4-90-511-20	R4-90-800-10	R4-90-804-10	R4-EM-52	R4-EM-72	R4-EM-87	R4-EM-952
R4-EM-9	✓		✓	✓				✓
R4-EM-8	✓		✓	✓				
R4-EM-5 & 7	✓		✓		✓		✓	
R4-EM-4 & 6		✓				✓		
R4-EM-1 & 2	✓		✓		✓		✓	

southco®

We are proud to be Southco's authorized distributor of over 20 years